



## Case Study: Klingele's Journey of Green Transformation

**Dr. Jan Klingele**





North  
America

Europe

Asia

Africa

South  
America

Australia







# SCIENCE BASED TARGETS

DRIVING AMBITIOUS CORPORATE CLIMATE ACTION



# SBTi committed companies present

**MODEL**



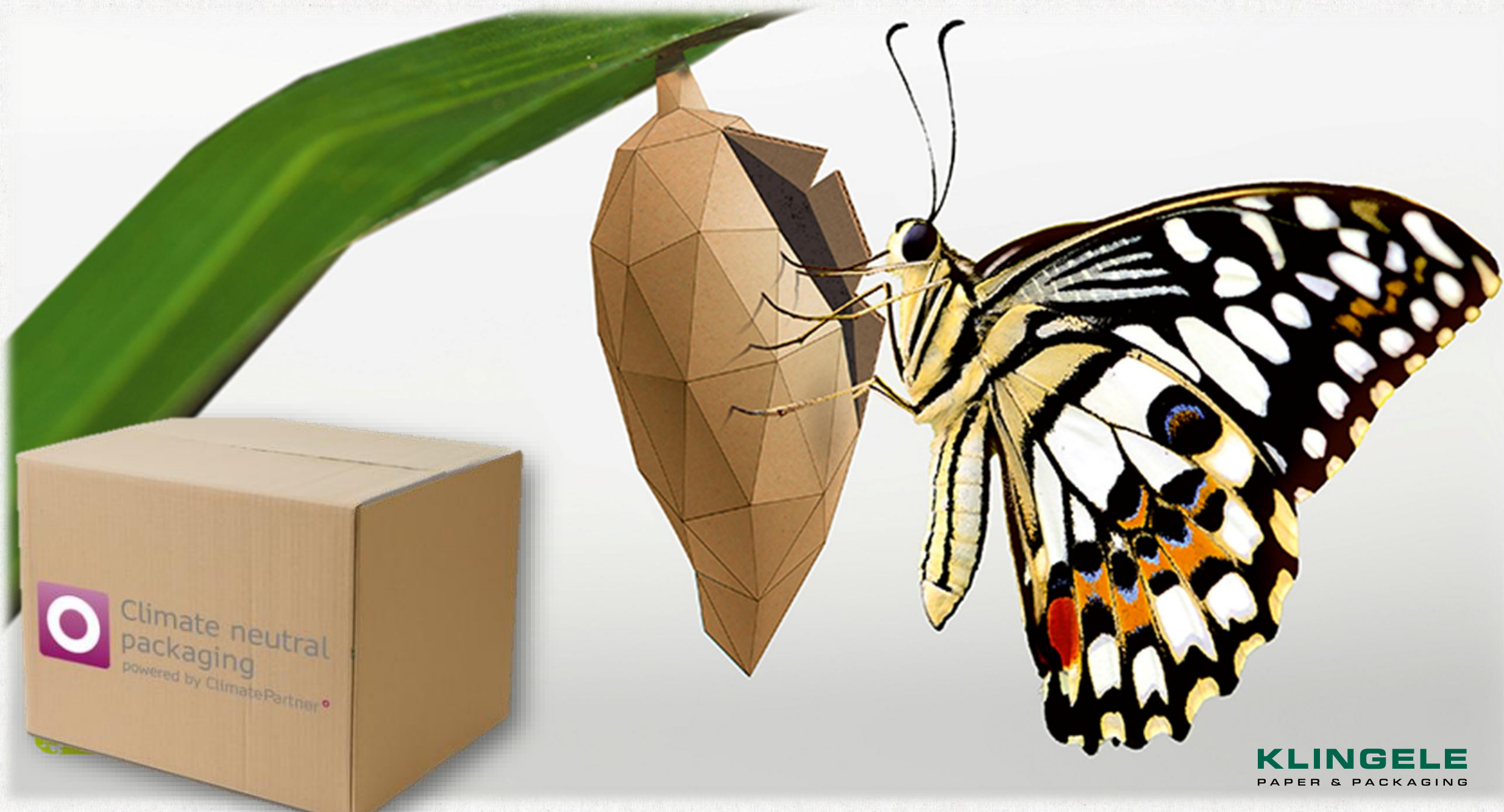
**Marubeni**



**KLINGELE**  
PAPER & PACKAGING

**SCGP**

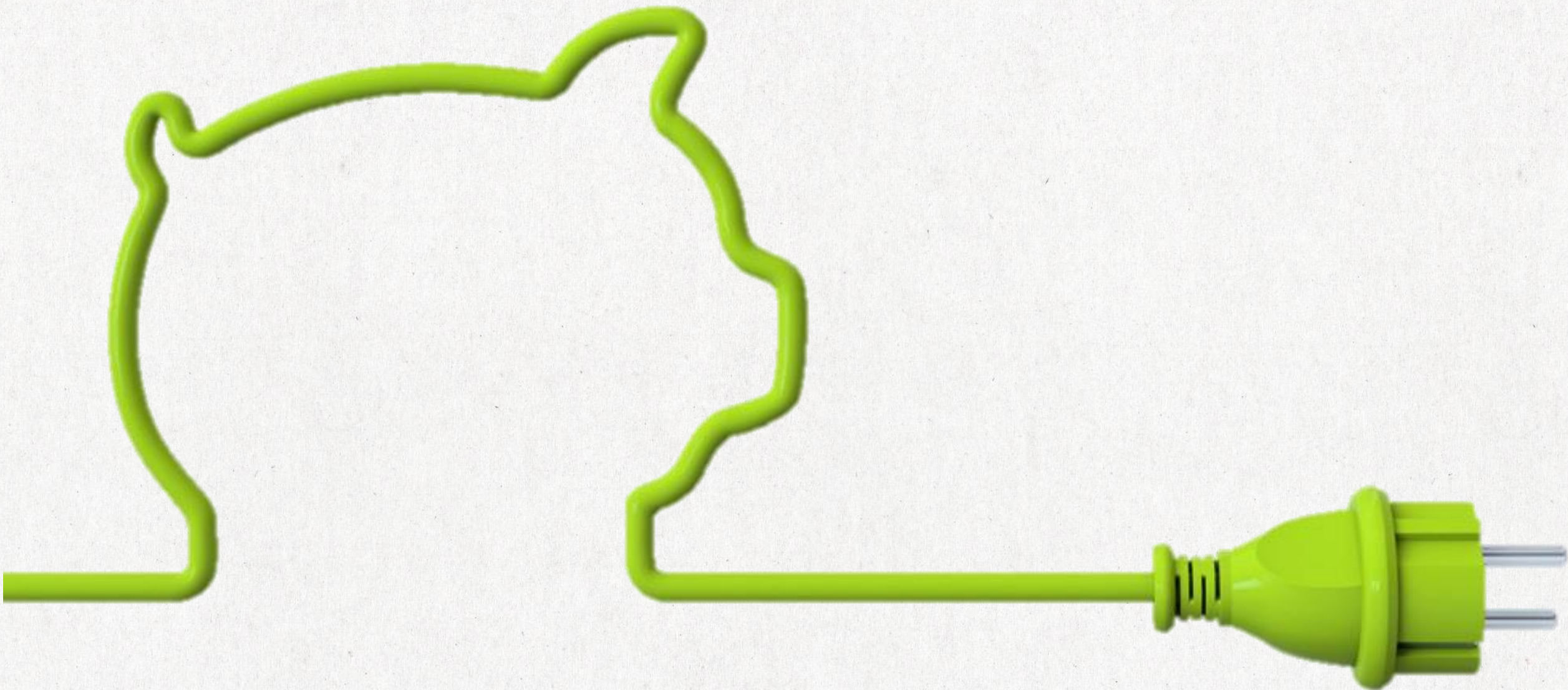




Climate neutral  
packaging  
powered by ClimatePartner

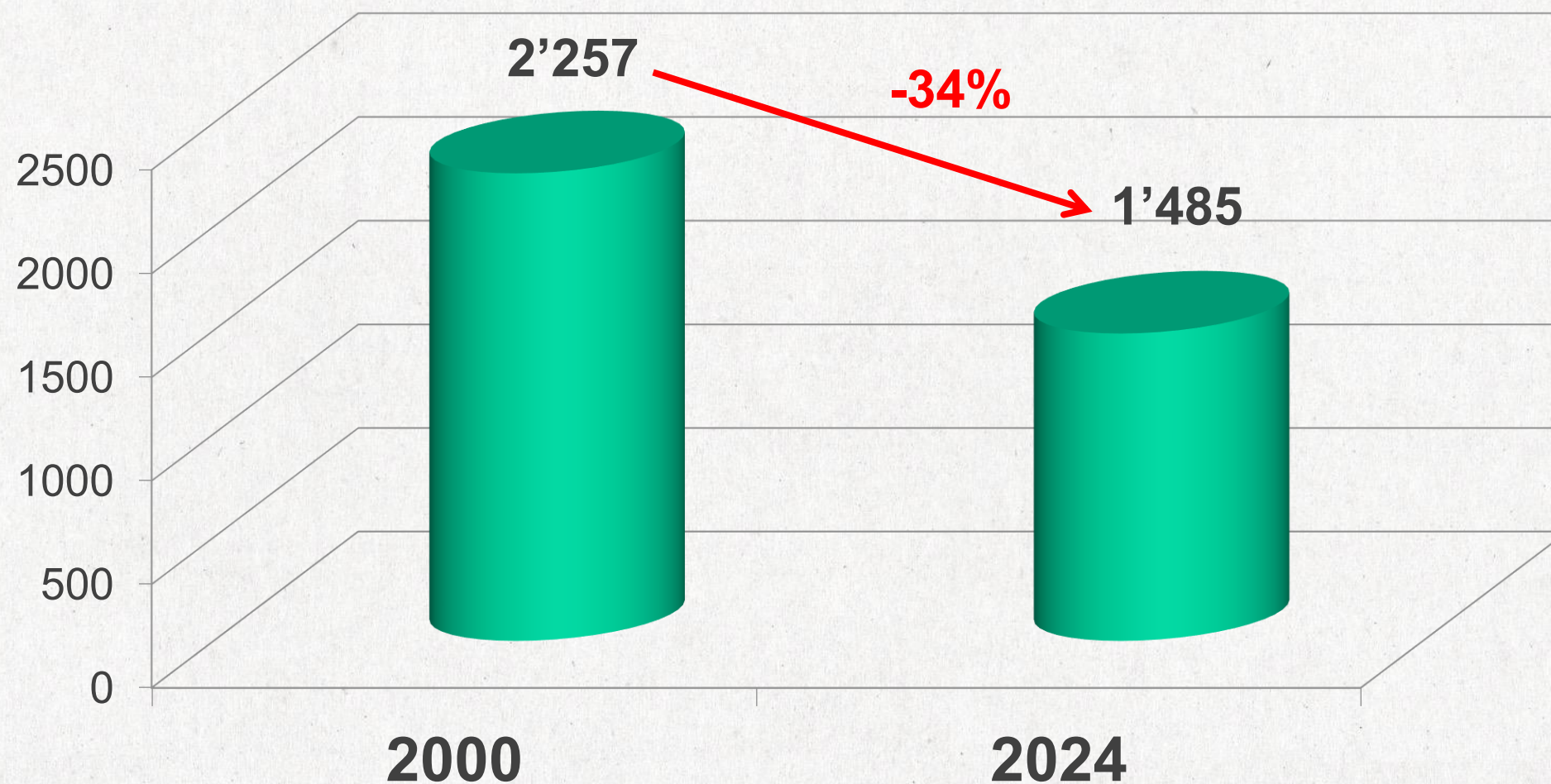
**KLINGELE**  
PAPER & PACKAGING





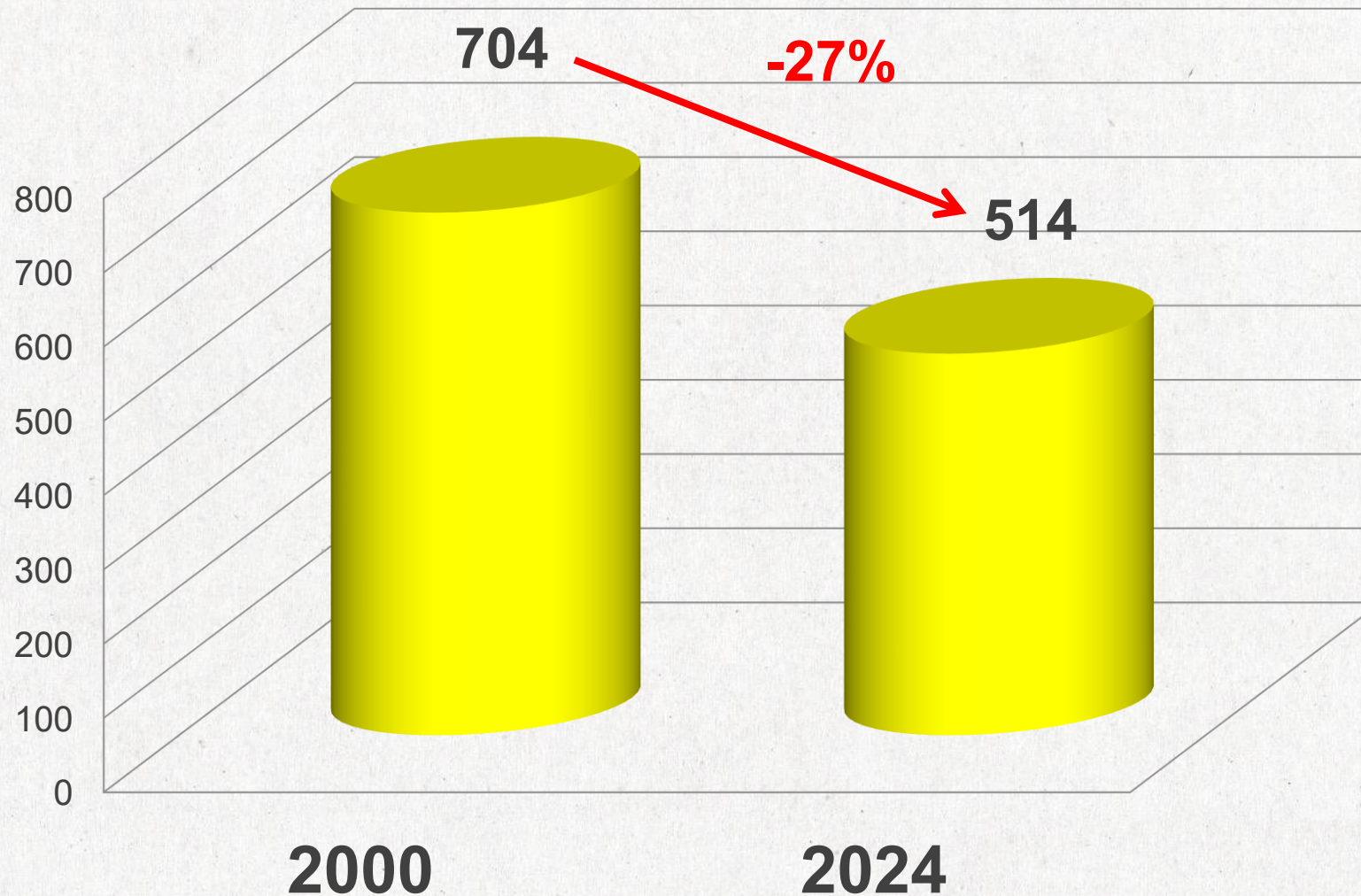


# Thermal energy in kWh/t





# Electric power in kWh/t























THE BOX PARTNERS

**KLINGELE**  
PAPER & PACKAGING GROUP  
PAPER & PACKAGING

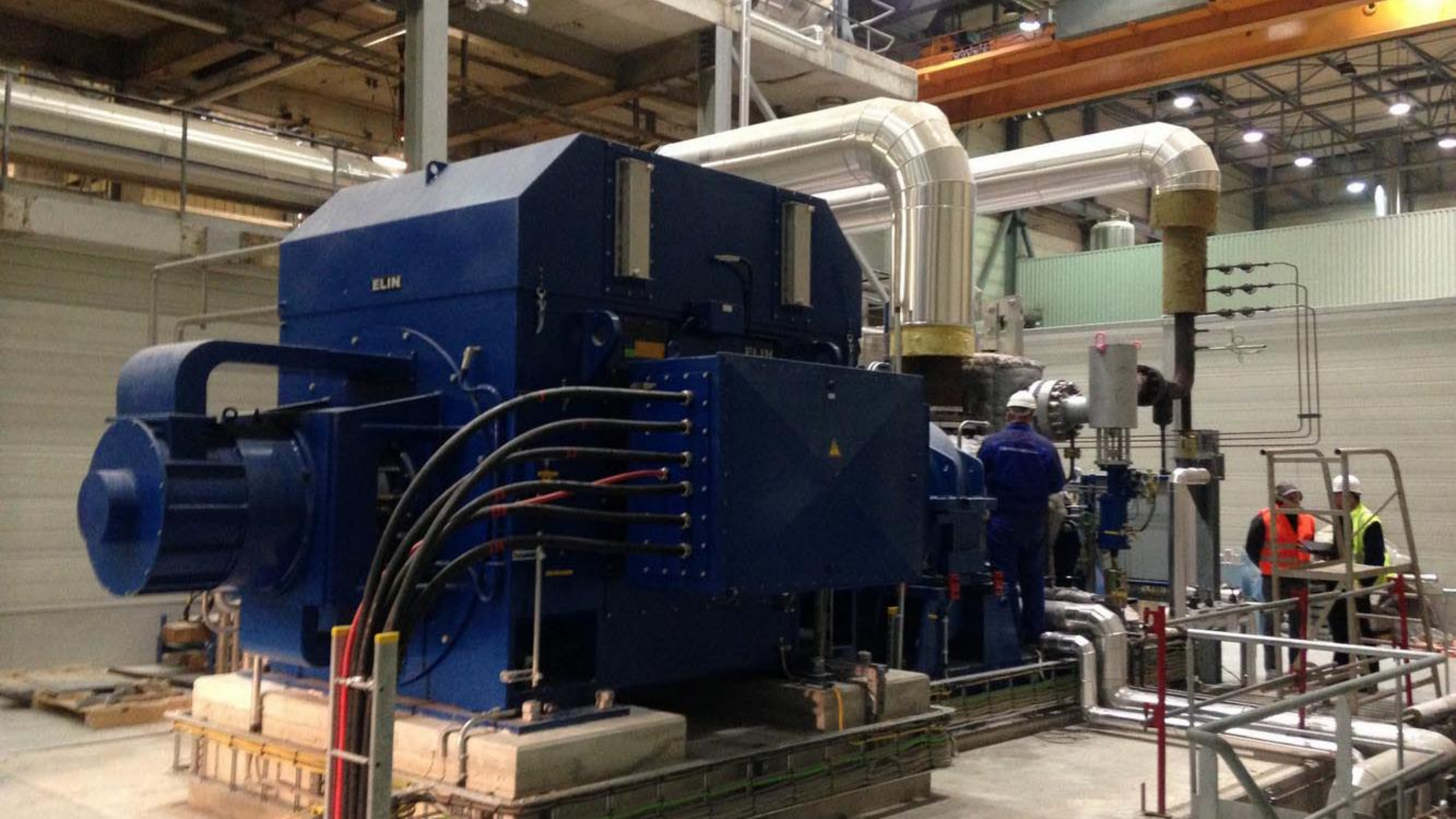






























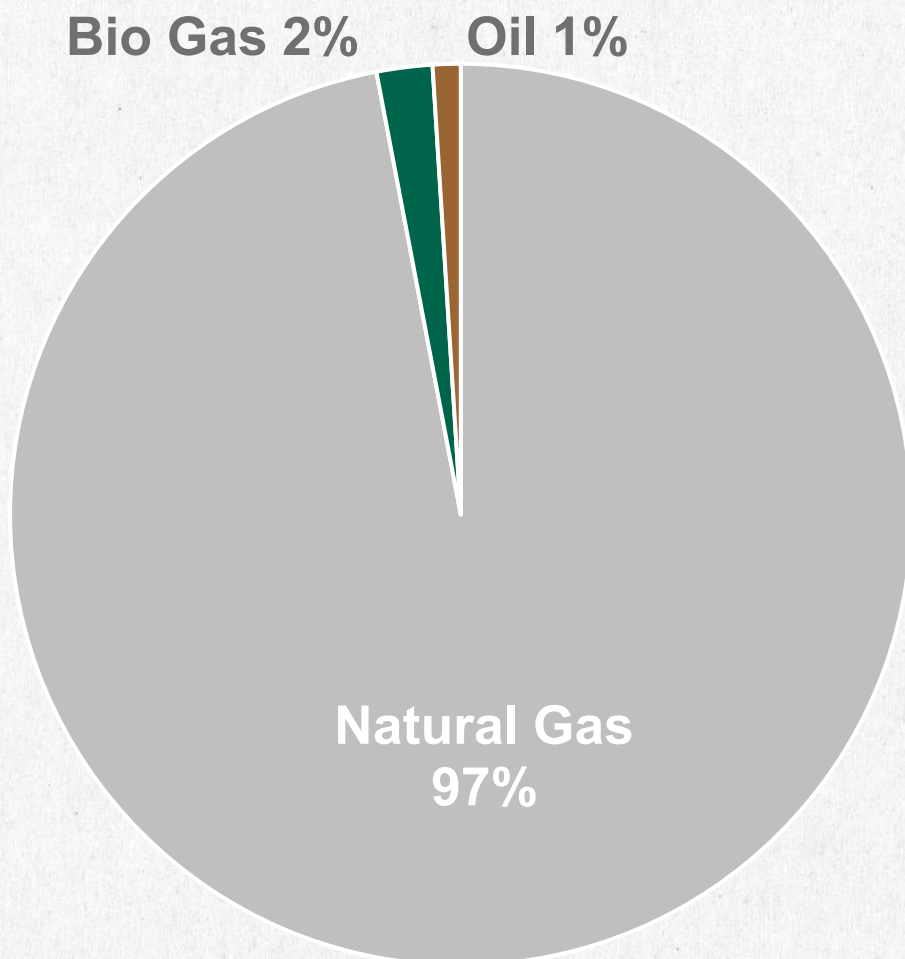




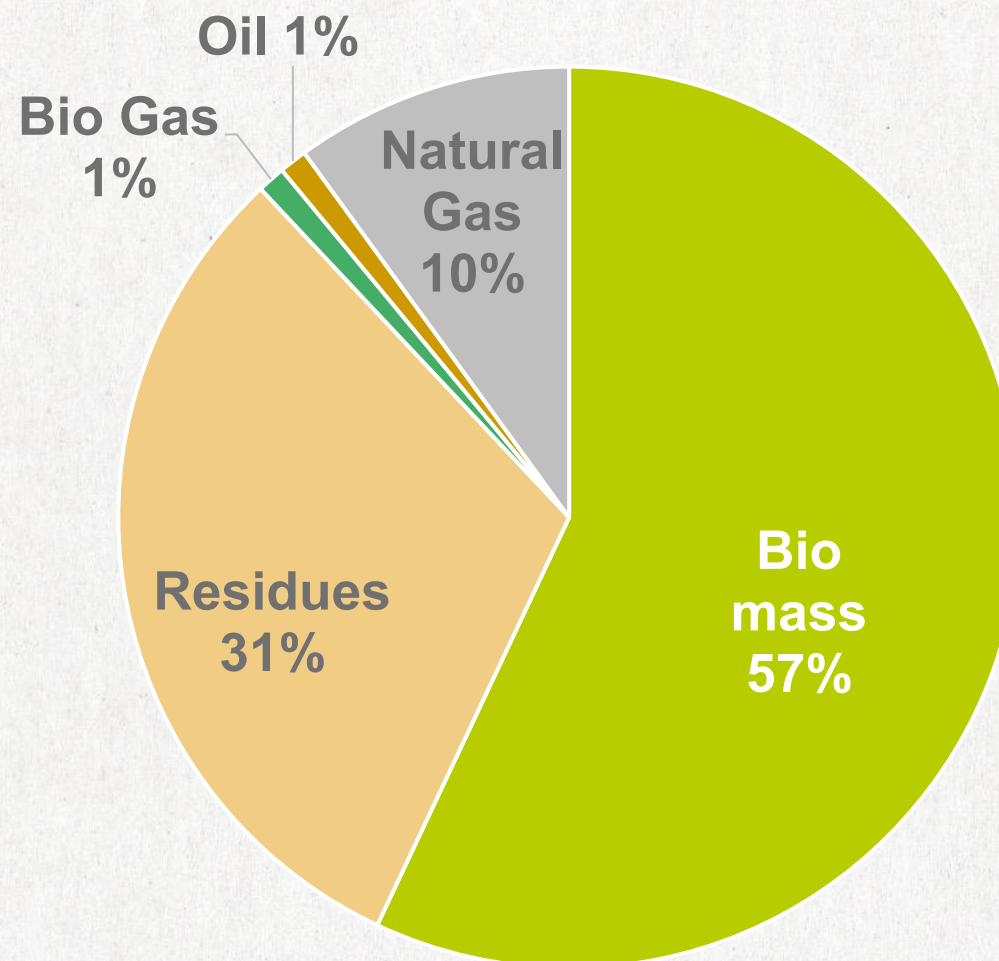




## Fuel 2000

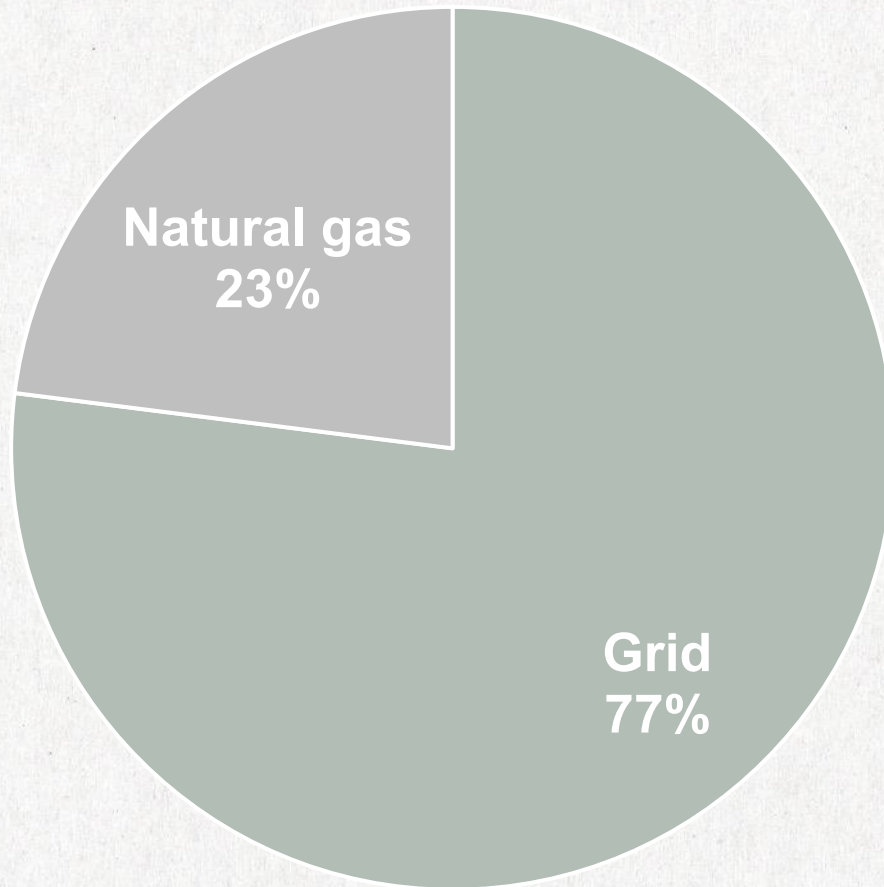


## Fuel 2025

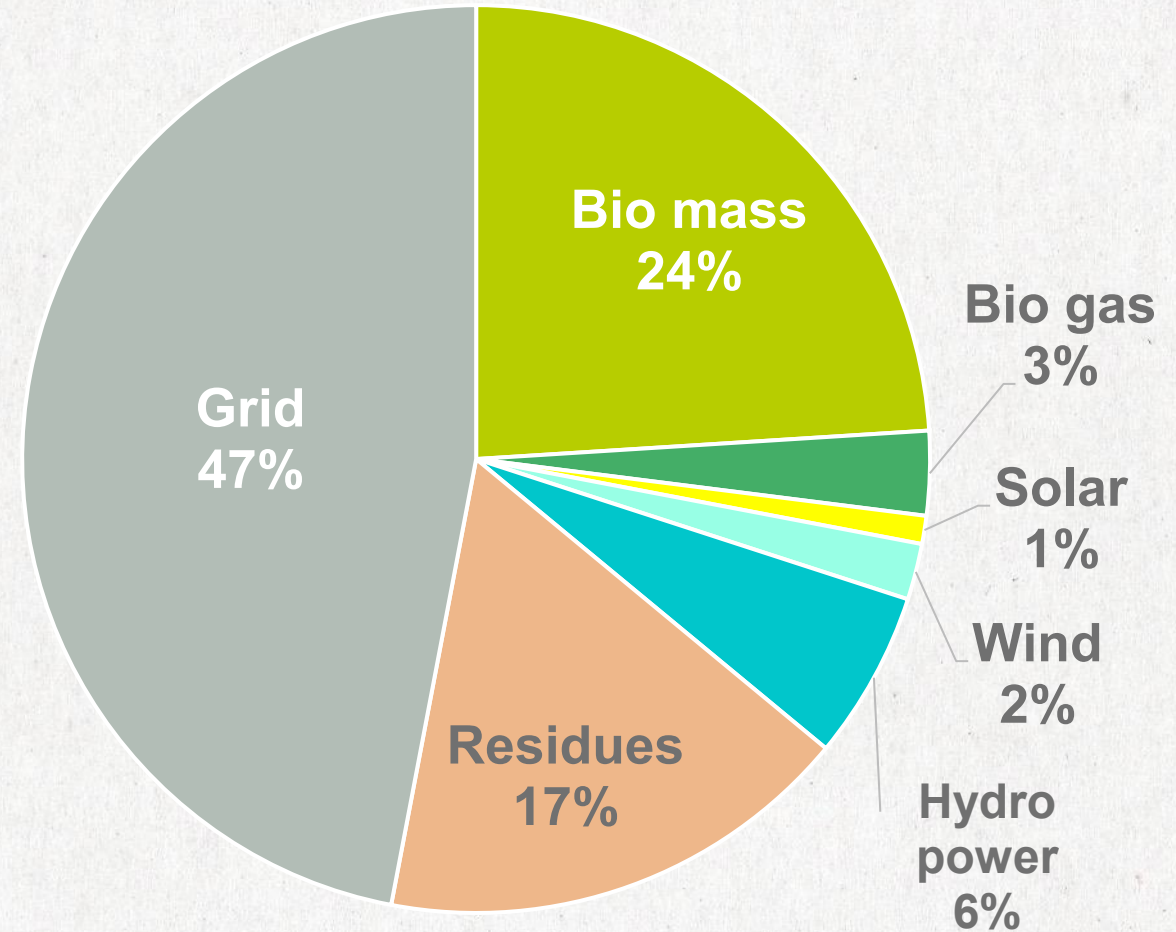




## Power 2000



## Power 2025





# WORLD CORRUGATED AWARDS 2019



Winner for outstanding  
performances in  
environmental protection

Member of  BLUE BOX PARTNERS

**KLINGELE**  
PAPER & PACKAGING GROUP  
PAPER & PACKAGING







# The „ simple “ way

Green electricity from the grid



Green hydrogen from a new pipeline



External CO<sub>2</sub> capturing











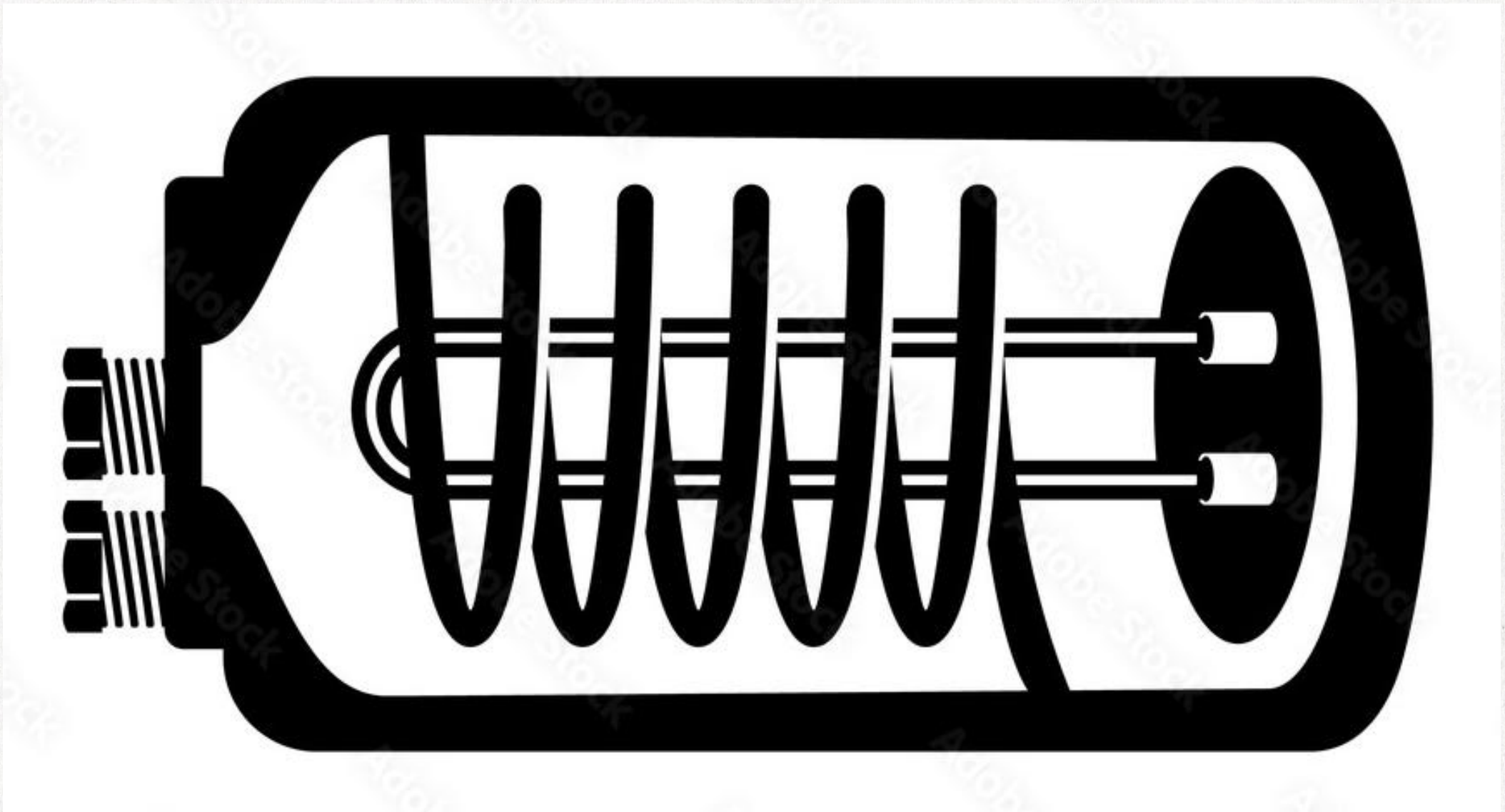




2.200 kW peak

**KLINGELE**  
PAPER & PACKAGING











# Tenerife Box Plant CO<sub>2</sub> Emissions

	2024	Savings
Oil	1'414 t	952 t
Power	300 t	176 t
Previous power savings		270 t



# Investment

Extension of PV roof system	1.950.000 €
Upgrading power connection	440.500 €
Energy storage	1.000.000 €
Hybrid Boiler	900.000 €

---

<b>Total invest</b>	<b>4.290.500 €</b>
---------------------	--------------------















# Heat Storage



# Electric Power Storage





# Werne Box Plant CO<sub>2</sub> Emissions

	2024	Savings
Natural gas	3'143 t	1'452 t
Power	2'206 t	1'765 t
Previous power savings		385 t



# Investment

Ground-mounted PV system	3.000.000 €
Extension of PV roof system	550.000 €
Wind turbine, incl. connection	6.000.000 €
Upgrading power connection	1.270.000 €
Energy storage	4.300.000 €
<b>Total invest</b>	<b>15.120.000 €</b>



A scenic landscape at sunset. A winding asphalt road leads from the foreground into the distance, flanked by a metal guardrail on the right. To the left, a steep, rocky hill rises, with a few small figures of people visible on its crest. The sky is a vibrant blue, filled with wispy white clouds and a large flock of birds in flight. The sun is low on the horizon, casting a warm, golden glow across the scene and reflecting off the clouds.

# Domo arigato

# KLINGELE

PAPER & PACKAGING